

**The Scrappy Sawtooth Star****Block basics:**

- Finished block size is 8 1/2" square.
- Use whichever neutral thread color makes the most sense.
- All seams are scant 1/4" seams unless otherwise indicated.

**Choose your fabric:**

- Parts shown in the picture above in yellow should be a SOLID fabric, any color you find to be a nice contrast to the other fabrics in the block. Use the same solid fabric for the entire block. Fabrics that read as a solid from a few feet away, such as mottled batiks or very tiny prints, are also acceptable.
- For the rest of the block, fabrics can be any combination, this is a real "close your eyes and reach in your scrap bag" block, whatever combination is pleasing to your eye will work. Just a few rules: 1) no solids, 2) fabrics used in the star should contrast with the background, so if you are using, say, dark brown as your background and pull a fabric with a dark brown background out of your scrap bag, toss it back, 3) no fabric used twice in the same block, and 4) no novelty or holiday fabrics. From here on out, these will be referred to as your "varied" fabrics.

*Note:* These instructions outline how to make one half-square triangle unit at a time. If you would rather use the two at a time method we have used a few times, that's fine. You'll need to cut your sixteen 2 3/4" squares as 3 1/2" squares instead and you will end up with 16 units rather than 8 (and be half-way done to completing a second block!).

Just remember, no varied fabric can be used twice in the same block so be sure to use your two matching HST units in different blocks. Also, be sure you have enough of the same solid fabric to complete two blocks before you begin.

**Cut the following fabric pieces:**

1. Four 2 1/2" squares of your solid fabric.
2. Eight 2 3/4" squares of your solid fabric.
3. Four 2 1/2" squares of your varied fabrics.
4. Eight 2 3/4" squares of your varied fabrics.

The 2 1/2" solid squares will be the squares for the four corners of your block. The 2 1/2" varied fabric squares will be the four center squares of your block. Set those aside for now.

## Construct the Half Square Triangle Units:

Use your eight 2 3/4" solid and eight 2 3/4" varied squares to construct the eight Half Square Triangle units needed for this block. Follow these steps:

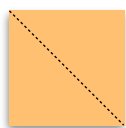


Figure 1



Figure 2

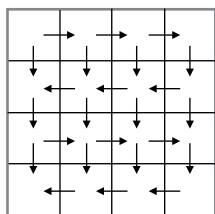


Figure 3

1. Draw a diagonal line from corner to corner on the wrong side of each of your eight 2 3/4" solid squares, as shown in *Figure 1*.
2. Pair up each solid square with one of your 2 3/4" varied fabric squares, wrong sides together. If you wish, pin the pairs together.
3. Pick up one of your paired squares and sew them together directly on the line you drew. You can chain stitch the squares, sewing one after another, until all eight pairs are sewn together in a long string. Clip the connecting threads to separate the paired squares.
4. Cut 1/4" away from the line you just sewed on each square, following along the line, as shown in *Figure 2*. The piece cut away is scrap.
5. Press open each square, pressing the seam toward whichever fabric is the darker of the two.
6. Check that each square is indeed perfectly square and trim away any excess (the measurements in the cutting instructions planned for a bit of excess). A completed Half Square Triangle unit is shown in *Figure 3*.

## Construct the block:

To complete your block, follow these steps:



Pressing Diagram  
(block viewed from  
the back)

1. Lay out your block pieces to match the block picture at the top of the first page.
2. Sew the four squares in the top row together. Press to the RIGHT as you view the back of the block, as shown in the *Pressing Diagram*.
3. Sew the four squares in the second row together. Press to the LEFT as you view the back of the block.
4. Sew the four squares in the third row together. Press to the RIGHT as you view the back of the block.
5. Sew the four squares in the fourth row together. Press to the LEFT as you view the back of the block.
6. Sew the four rows of the block together, pressing all rows DOWNWARD.
7. Once your block is completely pressed, double check that it is indeed 8 1/2"

NOTE: The points of your star should NOT hit the edge of your block, but end 1/4" in from the edge. If they do hit the edge of the block, the points of the star will be cut off when this block is sewn to other blocks.

Bring your finished blocks to the guild meeting on October 23 to participate in the drawing.

Questions? Suggestions for future blocks? Feel free to email me at [smclarkson@gmail.com](mailto:smclarkson@gmail.com).