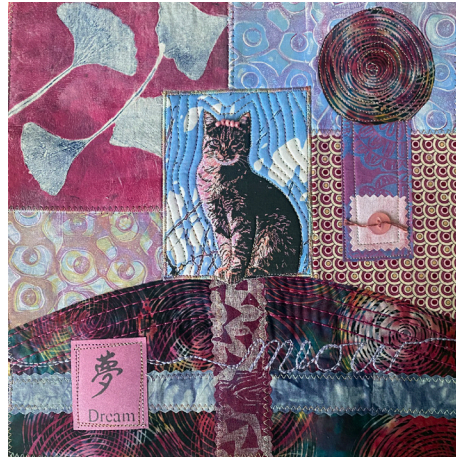


Pet Project Fabric Collage - with Lisa Thorpe

Northern New Mexico Quilt Guild

Tuesday March 25th, 2025 9am-3pm



Workshop Description:

We all love our sweet faithful pets and now you get honor yours in fabric.

At the beginning of class Lisa will walk you through using the Oli: photo to sketch app on your iPhone or iPad. Then she will print out your colorized altered image on cotton ready for you to begin the fabric collage fun. After a demonstration of design and composition each participant will begin creating their own Pet Project art quilt. By the end of the day everyone will have a sweet 12x12" art quilt, featuring your pet, ready to pop into a shadow box frame or finish any way you choose. If you don't have a pet picture you can download an image of any animal you want to use.

What you need to be ready for workshop:

1. Photo of your pet.

You will need a good photo of the pet you want to feature in your iPhone or iPad photo gallery. If you don't have a pet you can download an favorite animal of your choosing to use instead.

2. Load the Oli:photo to sketch app

You will need to upload the Oli:photo to sketch in your apple device.

(If you don't have a Apple device you can borrow one of Lisa's or work with a friend in the class who has one.)

Materials Lisa Brings:

- Her inkjet printer and cotton fabric to print you pet on. Your pet image will be 4x5"
- Craft felt cut to 12x12 for backing,
- Craft felt cut to 4.25x5 for backing for pet pic
- Other printed ephemera to add to your design.

Materials you need to gather:

- 1/2 yard Wonder Under or Misty Fuse or other 2 sided fuse
- Iron (there will be irons to share - parchment or Teflon sheet is good to protect iron from fuse)
- Small pieces of fabric to use in collage, in colors you love and relate to pet image colors
- Buttons, ribbons, lace – dig through your stash.
- Rotary cutter, cutting mat + Ruler
- A pair of fabric scissors - *pinking shears are nice if you have them*
- Your sewing machine and a variety of threads

**The class is designed to use a sewing machine but fusing and hand stitching only is possible if you prefer.*

- *Optional Embroidery floss or pearl cotton of your choice, needles for hand stitch if you want*

Questions ?: email me at artist@lisathorpe.com